

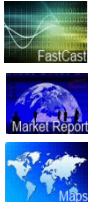


Forecast Dashboard: Getting started

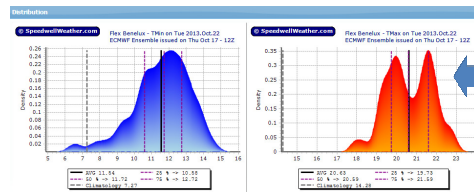
The Speedwell Forecast Dashboard is a fast and convenient way to view all of your downscaled forecast products including single sites and baskets.

Viewing Different Ensembles and Forecast Runs

- The ECMWF & GFS Operational and Ensemble forecasts are available for selection using the buttons at the top
- The latest runs can be accessed via the +/- button
- Daily TMin, TMax, TAve and Precip forecasts can be viewed
- Note the inks to other important tools through the icons at the top right:



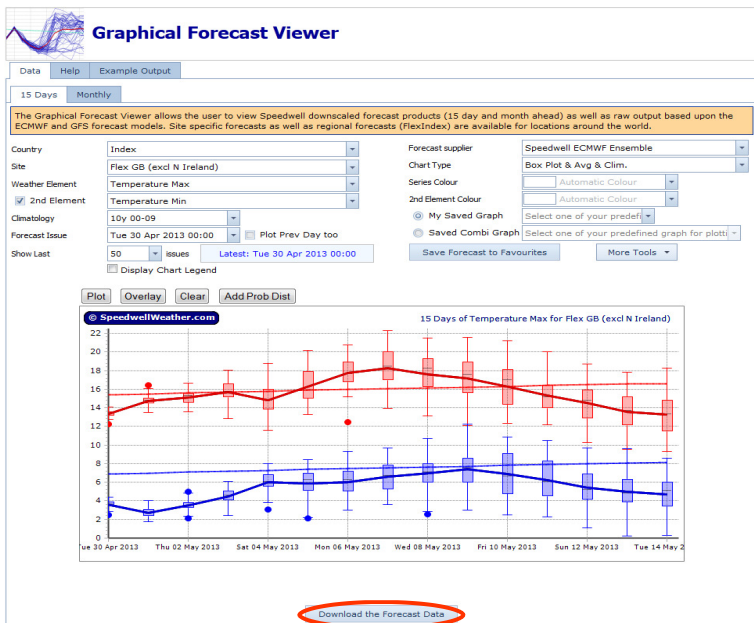
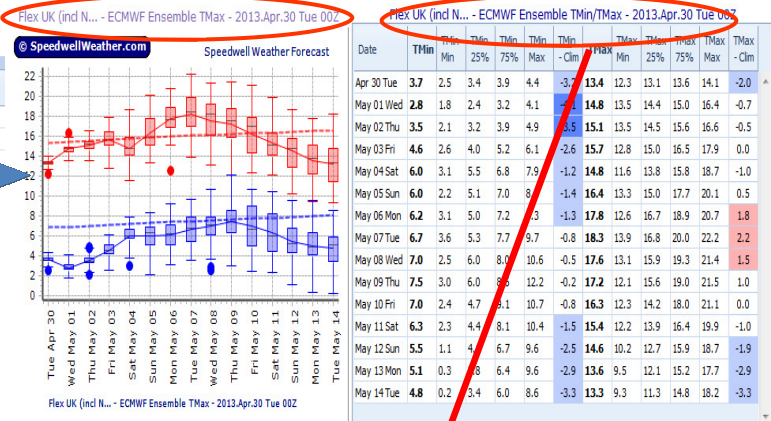
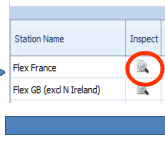
- FastCast:** Go here to view the latest forecast change frame by frame.
- Market Report:** See the impact of the ECMWF 15-day forecast on the fair value of CME Weather Futures
- Maps:** View the ECMWF and GFS forecasts as maps for European and North America



Double click on any forecast daily value to see the probability distribution

Viewing more information for a site

- Click the *Inspect* icon, next to the site of interest as shown right
- The site's forecast graph and a numerical table appear below the main grid.
- View the Graphical Forecast Viewer via the left hyperlink
 - All the ensembles can be viewed here
 - e.g. ECMWF, GFS, Speedwell, Operational
- Detailed statistics are available via the right hyperlink
 - e.g. Climatology, Medians, Quartiles



Single Site Detailed Weather Forecast Statistics

The Multi Site Forecast Grid presents numerically each day of the 15-day forecast for the chosen weather variable for multiple sites.

Date	Member 1	Ensemble Avg	Ensemble St Dev	Ensemble Max	Ensemble Min	1st Quartile	Median	3rd Quartile	Climatology	Diff. vs Clim.
Wed 24 Apr 2013	14.85	14.74	0.41	15.69	13.85	14.44	14.76	15.02	14.69	0.05
Thu 25 Apr 2013	14.55	14.54	0.55	15.61	13.23	14.12	14.55	14.87	14.81	-0.28
Fri 26 Apr 2013	10.29	9.94	0.44	10.61	9.66	9.73	10.00	10.28	14.93	-5.06
Sat 27 Apr 2013	9.79	9.42	0.58	10.71	7.89	9.08	9.40	9.88	15.05	-5.64
Sun 28 Apr 2013	10.57	10.87	0.76	12.19	8.56	10.42	10.92	11.33	15.17	-4.30
Mon 29 Apr 2013	9.25	10.52	0.98	12.80	8.32	9.92	10.66	11.03	15.28	-4.76
Tue 30 Apr 2013	11.18	10.29	1.15	12.53	7.78	9.62	10.32	11.24	15.39	-5.11
Wed 01 May 2013	10.21	9.88	1.34	13.19	7.52	8.73	9.85	10.86	15.50	-5.62
Thu 02 May 2013	9.42	10.67	1.43	13.80	7.48	9.51	10.59	11.53	15.61	-4.93
Fri 03 May 2013	10.67	11.43	1.83	16.24	8.21	10.11	11.32	12.91	15.71	-4.27
Sat 04 May 2013	12.74	12.81	2.07	18.14	9.40	11.08	12.66	14.24	15.80	-2.99
Sun 05 May 2013	14.97	13.59	2.62	20.70	8.41	11.19	13.69	15.25	15.90	-2.31
Mon 06 May 2013	14.83	14.43	2.77	22.08	9.89	12.67	13.98	15.88	15.99	-1.56
Tue 07 May 2013	13.63	14.66	2.94	22.41	8.08	12.95	14.48	16.54	16.07	-1.44
Wed 08 May 2013	13.58	14.32	2.84	21.32	9.26	12.30	14.08	15.73	16.15	-1.83
Sums	181.33	182.10	1.51	238.01	136.54	165.88	181.15	196.51	232.06	

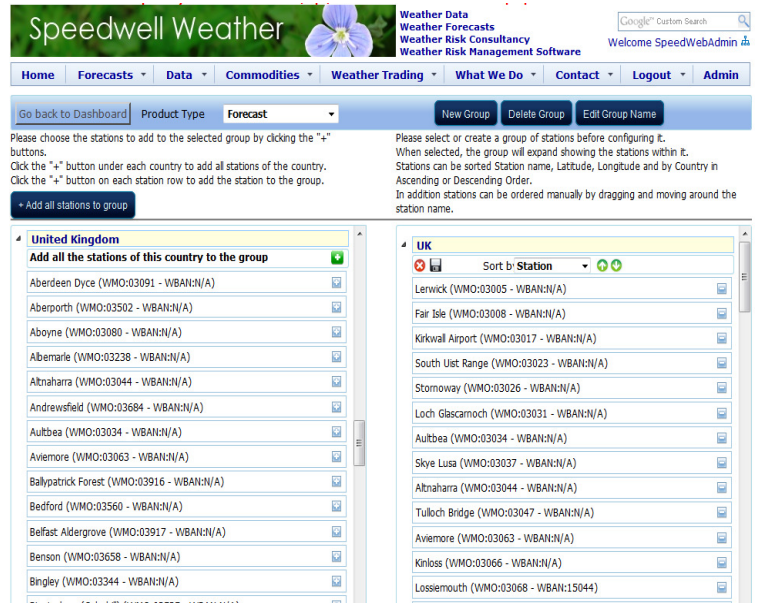
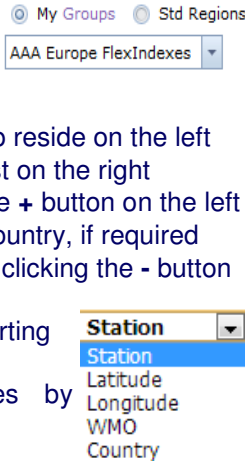
Click here to download the forecast data in .csv format.

Forecast Dashboard: Getting started

Creating your own groups

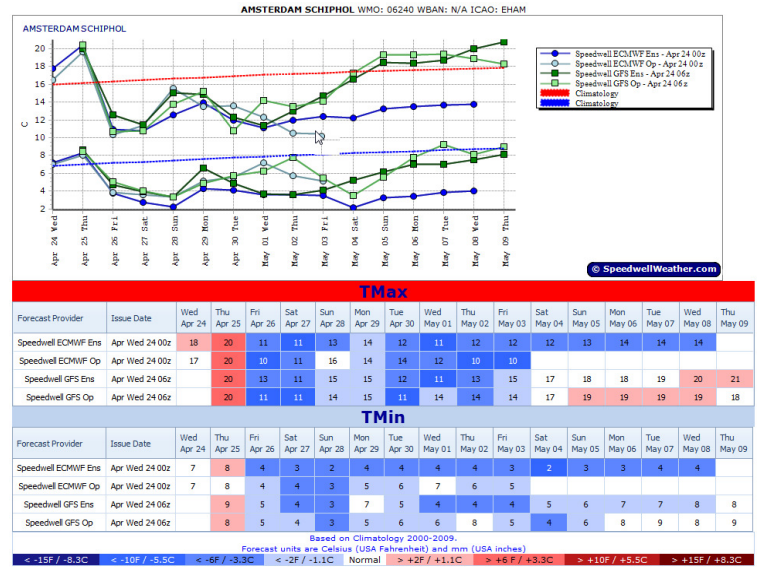
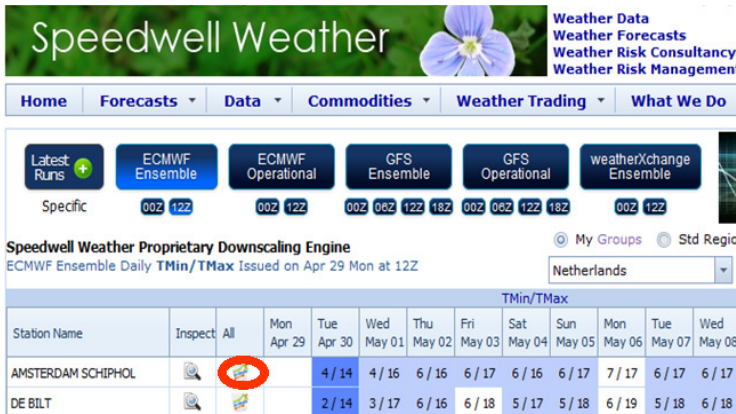
Users can create an unlimited number of groups sorted in any order with any combination of forecast sites including baskets

- Click on the *My Groups* hyperlink
- To create new group of stations, select "New Group"
- The sites for selection into your group reside on the left
- Your user groups are shown in the list on the right
- Add sites to your group by clicking the + button on the left
- One-click add all stations from that country, if required
- Remove sites from an existing list by clicking the - button
- Sites can be sorted by dragging and dropping or by selecting one of the sorting options:
- Remember to save any changes by clicking on the disk icon



Viewing Model Comparison

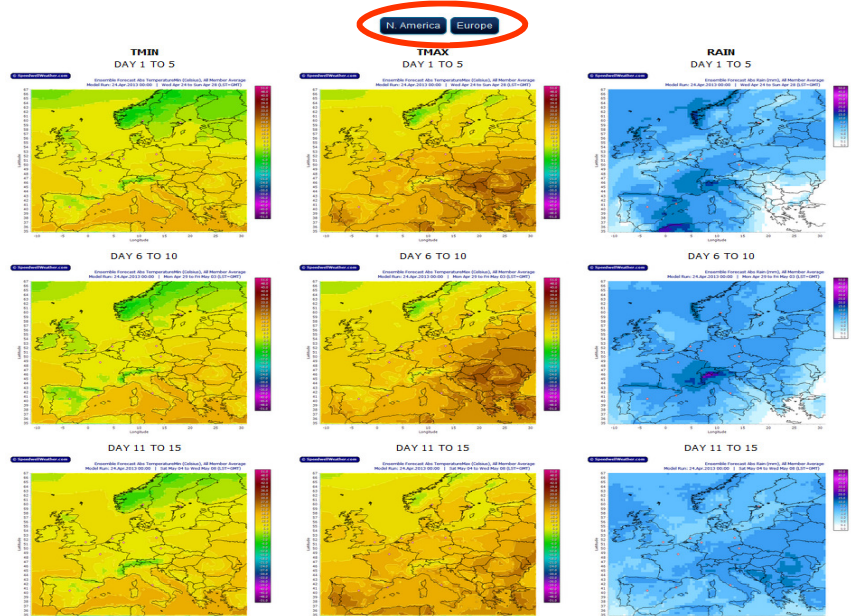
- Click the *All* icon adjacent to your site of interest using the icon shown below.
- A comparison of the forecast models appears as shown right



Viewing Forecast Maps

These are available at the bottom of the Dashboard screen

Select **N. America** or **Europe** to load the latest images



Contact Us:
Speedwell Weather (USA)
Speedwell Weather (Europe)

+1 (0) 843 737 4843
+44 (0) 1582 465 561

Info@speedwellweather.com
Info@speedwellweather.com